

## Global Marine Networks'

# XTracker<sup>TM</sup> GS

**Global LEO Satellite operation using  
the Globalstar Simplex Data Network**



**Compact:**  
Standard enclosure measures  
only 3.25" x 6.5" x 1"  
(83mm x 165mm x 25mm)

**Power: 4 - 1.5V lith. batteries**

**Range: Globalstar coverage**

**Latency: 20 Seconds to web**

**Integrated Motion Sensor,  
Standard Messaging,  
Alternative Reporting,  
Change of Location.**

XTracker GS is a dependable and extremely compact tracking device that sends out position reports at pre-programmed intervals from anywhere in the coverage area of the Globalstar satellite system (see map). Position reports contain date, time, latitude, longitude, and average course and speed over the ground. GPS position reports are recorded, transmitted, and may be posted on the web within 20 seconds, on average. XTracker GS modest power requirements of 4 AA "off-the-shelf" 1.5V lithium batteries make it ideal for remote locations.

Vessel installation is quick and simple using automotive adhesive tape or included mounting bracket. XTracker GS starts submitting position reports immediately upon power up. The only buttons or switches on the XTracker GS unit is power on-off.

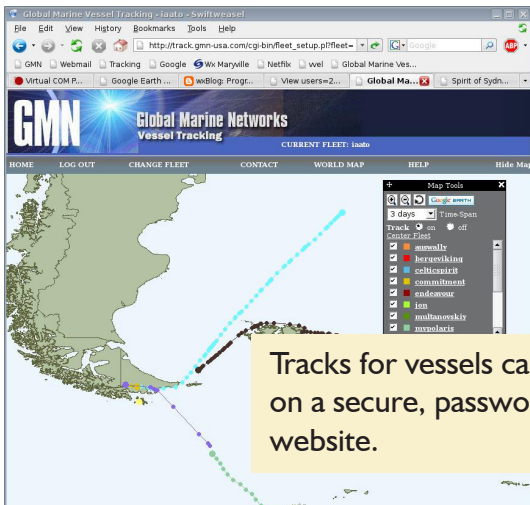
Vessels equipped with XTracker GS can be monitored on a secure password-protected website or with Google Earth. Position reports can be e-mailed to a predefined address or downloaded and displayed on vessels using our XGate software.

For full details, visit us at ...  
<http://www.globalmarinenet.com/xtracker.htm>

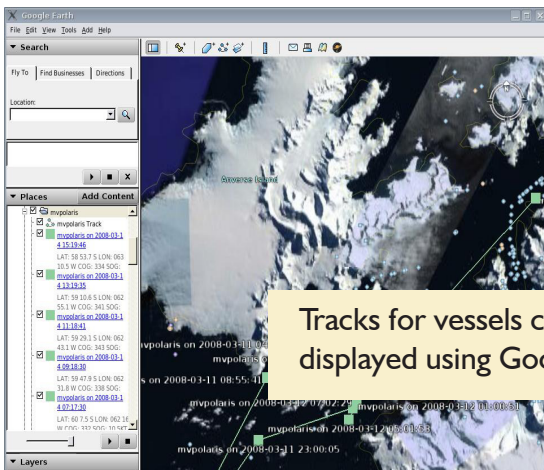
# XTracker™ GS

## Features:

- Up to 12 different reporting times
- Interval or 24 hour operation mode
- Alternate reporting scheduling
- Low Battery Message
- Motion Sensor/Vibration parameters and scheduling
- Reduced Messaging/Re-centering
- Contact Closure parameters
- Delay To Start
- Diagnostic messages
- Hardware on/off feature
- Power on and off by changing the orientation of the connector cover
- Power cycling the unit initiates GPS re-centering functionality
- Unscrew and rotate connector cover to power on/off unit
- Quick install using either industrial adhesives or screw mounts
- Total packaged solution requires no harnesses, no external power and no external antenna
- Change of location sensing sends alerts if asset moves outside of pre-determined range
- Messaging cost reduction mode: reduced satellite messaging if asset remains in same location
- Run time monitoring
- Hardware on/off feature allows the unit to initiate GPS re-centering functionality



Tracks for vessels can be displayed on a secure, password-protected website.



Tracks for vessels can also be displayed using Google Earth.

## Technical Specifications:

Standard Enclosure Dim: 3.25" x 6.5" x 1" (83mm x 165mm x 25mm)

Weight: 14 oz. with batteries

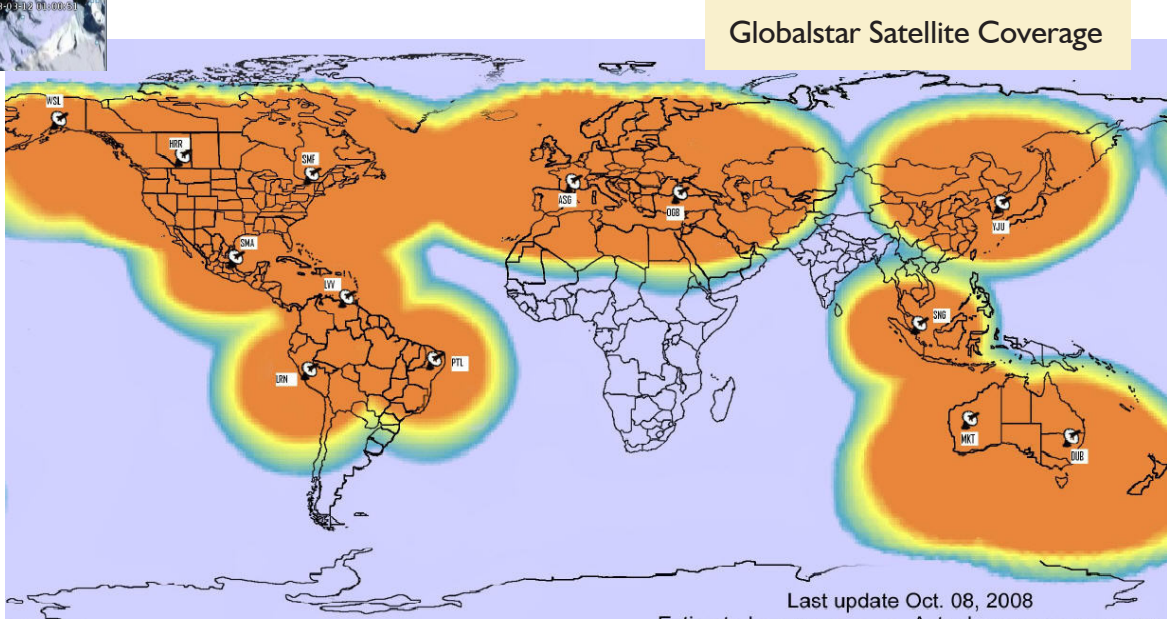
Operating Environment: Temp -35C to 70C :: -31F to 158F

Electrical: Uses 4 AA "off-the-shelf" 1.5V lithium batteries for 3+ years battery life

Range: Globalstar coverage (see map)

Latency: 20 Seconds average device to web

Installs in minutes using automotive adhesive tape or included mounting bracket.



Globalstar Satellite Coverage

Last update Oct. 08, 2008

## Pricing:

- Hardware Unit \$399
- Activation Fee: \$59
- Monthly service fee:
  - \$149 - hourly position reports
  - \$77 - 2 hour position reporting
  - \$44 - 4 hour position reporting
  - \$36 - 8 hour position reporting

Global Marine Networks, LLC.  
 2668 Jericho Road  
 Maryville, TN 37803  
 1.877.379.8723 US toll free  
 1.865.379.8723 international  
[www.globalmarinenet.com](http://www.globalmarinenet.com)